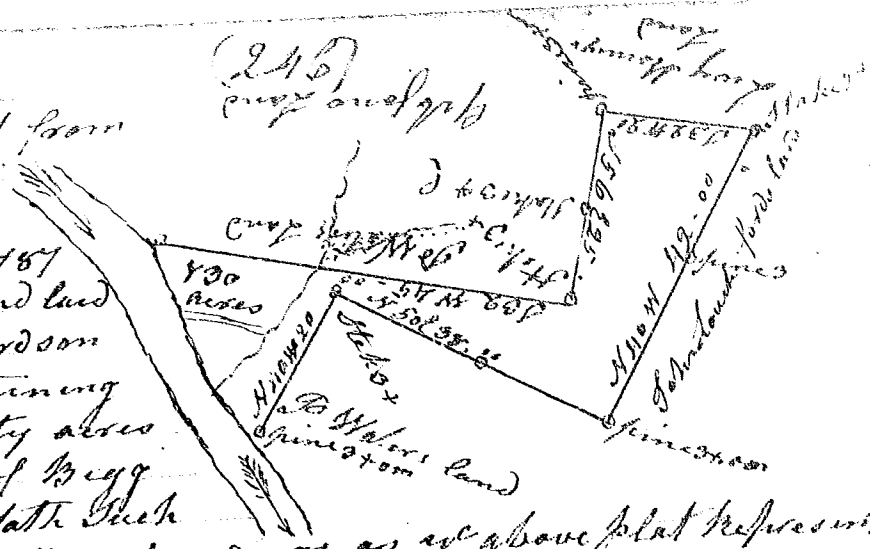


South Carolina  
 Pursuant to a warrant from  
 John Thomas Esq<sup>r</sup>  
 Comm<sup>r</sup> of Locations  
 bearing Date 31 Aug<sup>t</sup> 1787  
 I have admeasured and laid  
 out unto David Richardson  
 a tract of Land containing  
 one Hundred and thirty acres  
 on the North Side of Bigg  
 Saluda River and Hath Creek  
 Shape and Markes Buttings soundings as up above plat represents  
 Certified the 4 of Sep<sup>r</sup> 1787 by D. Waters S. S.  
 Recorded the 4 Sep<sup>r</sup> 1787



State of S. Carolina

Pursuant to a warrant  
 from John Thomas Esq<sup>r</sup>  
 Comm<sup>r</sup> of Locations in 96  
 District No. of Saluda  
 Dated the 11<sup>th</sup> day of June  
 1787. I have admeasured  
 & laid out unto George  
 Thompson a tract of 240  
 acres of land. Situate in  
 the District aforesaid in  
 Hartsville County on both  
 sides of Beaver Dam Creek of South  
 Carolin<sup>a</sup> River and Hath Creek from g. marks, buttings and bound-  
 ings as the above plat represents. Surveyed the 13<sup>th</sup> June 1787  
 Recorded 11<sup>th</sup> October 1787  
 Delivered the bones Wm D. Thomas D.



S. Carolina - Pursuant to a warrant from John  
 Thomas Esq<sup>r</sup> Com<sup>r</sup> for 96 Dist<sup>n</sup> of Saluda River  
 Dated the 18<sup>th</sup> Sept<sup>r</sup> 1787. I have admeasured  
 & laid out unto Wadsworth J. Turpin a  
 tract of 13 acres of land. Situate on Little  
 River Water of Saluda bounded on all sides  
 as an above mentioned of both creek from g  
 marks as the above plat represents  
 Surveyed the 21<sup>st</sup> Sept<sup>r</sup> 1787  
 Recorded 17<sup>th</sup> Oct<sup>r</sup> 1787 John Hunter D.

